



# Glucagon Receptor Polyclonal Antibody

<b>Catalog No</b>	YP-Ab-13275
<b>Isotype</b>	IgG
<b>Reactivity</b>	Human;Mouse;Rat
<b>Applications</b>	WB;IF;ELISA
<b>Gene Name</b>	GCGR
<b>Protein Name</b>	Glucagon receptor
<b>Immunogen</b>	The antiserum was produced against synthesized peptide derived from human GLR. AA range:95-144
<b>Specificity</b>	Glucagon Receptor Polyclonal Antibody detects endogenous levels of Glucagon Receptor protein.
<b>Formulation</b>	Liquid in PBS containing 50% glycerol, 0.5% BSA and 0.02% sodium azide.
<b>Source</b>	Polyclonal, Rabbit,IgG
<b>Purification</b>	The antibody was affinity-purified from rabbit antiserum by affinity-chromatography using epitope-specific immunogen.
<b>Dilution</b>	Western Blot: 1/500 - 1/2000. Immunofluorescence: 1/200 - 1/1000. ELISA: 1/5000. Not yet tested in other applications.
<b>Concentration</b>	1 mg/ml
<b>Purity</b>	≥90%
<b>Storage Stability</b>	-20°C/1 year
<b>Synonyms</b>	GCGR; Glucagon receptor; GL-R
<b>Observed Band</b>	54kD
<b>Cell Pathway</b>	Cell membrane ; Multi-pass membrane protein . Is rapidly internalized after ligand-binding. .
<b>Tissue Specificity</b>	Liver,Placenta,
<b>Function</b>	disease:It is a candidate for certain defects in non-insulin-dependent diabetes mellitus (NIDDM). The variant in position 40 (Ser) is found in some NIDDM patients, but also in nondiabetic subjects.,function:This is a receptor for glucagon which plays a central role in regulating the level of blood glucose by controlling the rate of hepatic glucose production and insulin secretion. The activity of this receptor is mediated by G proteins which activate adenylyl cyclase and also a phosphatidylinositol-calcium second messenger system.,similarity:Belongs to the G-protein coupled receptor 2 family.,
<b>Background</b>	glucagon receptor(GCGR) Homo sapiens The protein encoded by this gene is a glucagon receptor that is important in controlling blood glucose levels. Defects in this gene are a cause of non-insulin-dependent diabetes mellitus (NIDDM).[provided by RefSeq, Jan 2010],



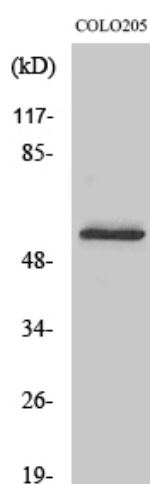
### matters needing attention

Avoid repeated freezing and thawing!

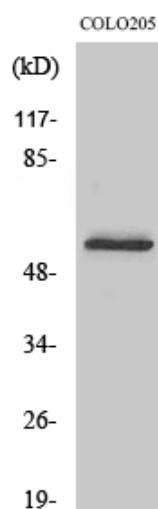
### Usage suggestions

This product can be used in immunological reaction related experiments. For more information, please consult technical personnel.

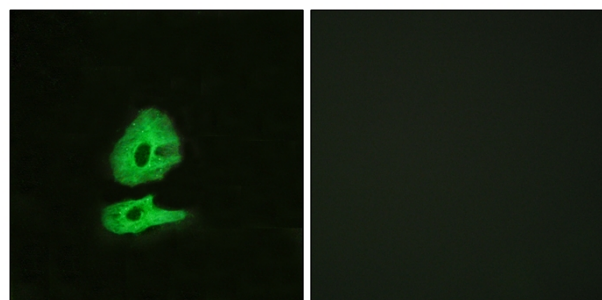
## Products Images



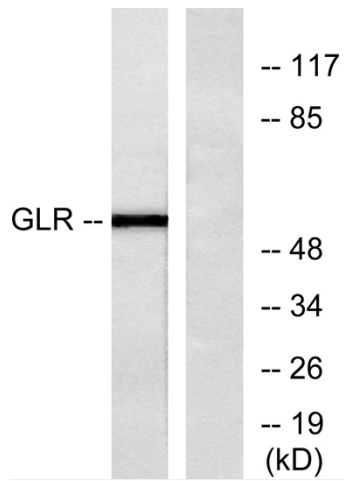
Western Blot analysis of various cells using Glucagon Receptor Polyclonal Antibody



Western Blot analysis of COLO205 cells using Glucagon Receptor Polyclonal Antibody



Immunofluorescence analysis of HeLa cells, using GLR Antibody. The picture on the right is blocked with the synthesized peptide.



Western blot analysis of lysates from COLO205 cells, using GLR Antibody. The lane on the right is blocked with the synthesized peptide.